

STEEL TIGHT-HEAD DRUMS LOADING UNITS SECURING

SCHÜTZ DRUMFIX

Forming safe loading units –
fast, efficient and
environmentally-friendly.



**The new single-use system for reliable
securing of four steel tight-head drums
on a wooden pallet:**

- For transporting filled and empty drums
- Full stackability and unrestricted transportability are retained
- Delivery of pre-assembled, ready-to-fill loading units possible
- No additional outer packaging such as foil, pallets, straps, etc. required
- No handling with long and dangerous screws, no complicated reusable system

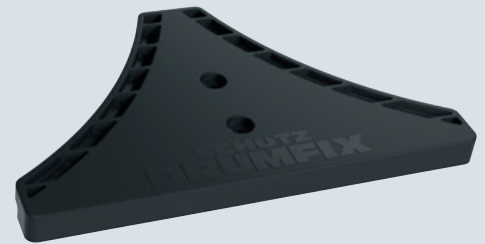
In case of technical concerns or questions: tcs@schuetz.net



www.schuetz.net

SCHÜTZ DRUMFIX set

A set comprises four identical DRUMFIX elements



Fast assembly

Only one screw is required for securing each SCHÜTZ DRUMFIX element

In case of increased safety requirements, the DRUMFIX elements can be fastened with additional screws

We generally recommend securing the group of drums with two plastic straps



Certifications

DIN EN12195-1

DIN EN 12642 Annex B

EUMOS 40509

Material & Recycling

Manufactured from glass-fibre-reinforced plastic recyclate

Free collection by the SCHÜTZ TICKET SERVICE for resource-saving material recycling